



# FORMATION EVALUATION LOG



## WELL : BASKER-3

FROM (m): 2500 TO (m): 3230 SCALE: 1/ 500

Country : AUSTRALIA	Latitude : 38°18'42.44"S	HOLE / CASING INFO 17 1/2" Hole to (mMDRT) : 1112m	Spud Date : 01-03-2006
Basin : GIPPSLAND	Longitude : 148°43'29.78"E	12 1/4" Hole to (mMDRT) : xxxx	Total Depth Date : xx-03-2006
Field : BASKER	UTM Co-ord X (m E) : 650106.2	13 3/8" Shoe at (mMDRT) : 1102.3m	Total Depth (mRT) : xxxxx
Permit : VIC/L26	UTM Co-ord Y (m N) : 5761989.6	9 5/8" Shoe at (mMDRT) : xxxx.xm	T.V.D. (mSS MSL) : xxxxx
Well Type : DEVELOPMENT	RT-LAT (m) : 21.5		Status : COMPLETED
Rig Name : OCEAN PATRIOT	RT-Seabed (m) : 174.4		

### ABBREVIATIONS

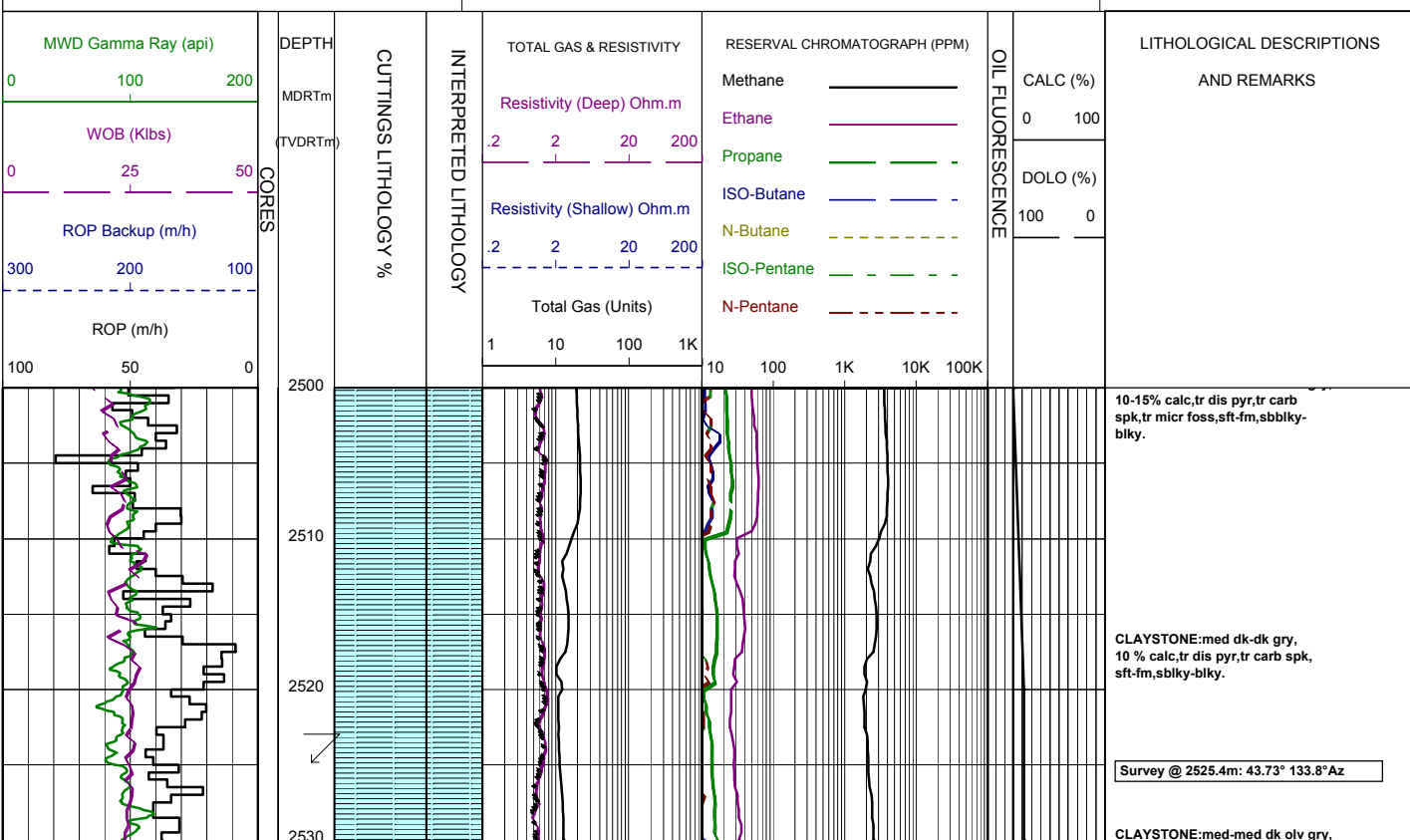
MW MUD WEIGHT	NB NEW BIT
FV FUNNEL VISCOSITY	RR RERUN BIT
PV PLASTIC VISCOSITY	CB CORE BIT
YP YIELD POINT	WOB WEIGHT ON BIT
FC FILTER CAKE	RPM REVS PER MINUTE
SOL SOLIDS	FLC FLOW CHECK
WL FILTRATE	CR CIRCULATE RETURNS
SD SAND - %	PR POOR RETURNS
S SALINITY - PPM	NR NO RETURNS
RM MUD RESISTIVITY	BG BACKGROUND GAS
RMF MUD FILTRATE	TG TRIP GAS
C CARBIDE TEST	STG SHORT TRIP GAS
LAT LOGGED AFTER TRIP	CG CONNECTION GAS
DS DEVIATION SURVEY	SG SWAB GAS
	SVG SURVEY GAS

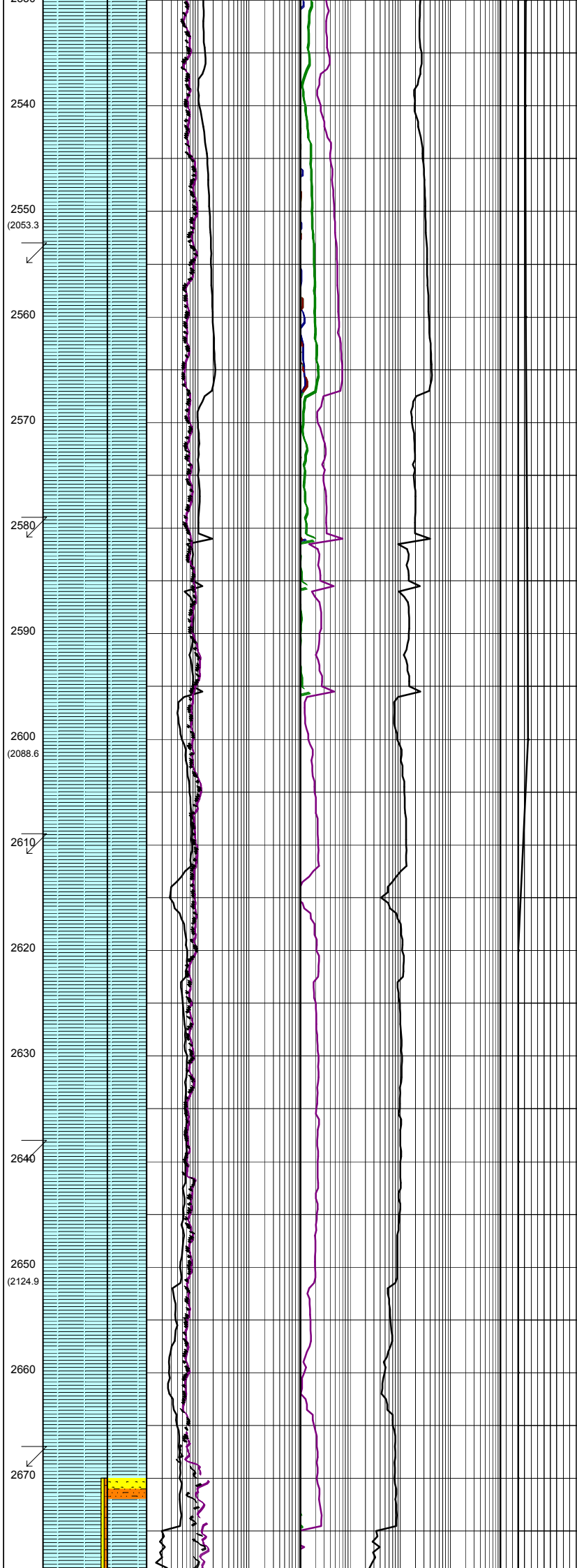
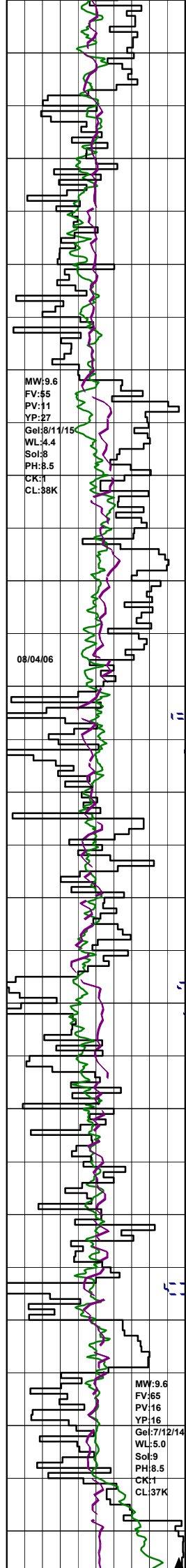
### LITHOLOGY LEGEND

	Claystone		Limestone		Brachiopoda
	Siltstone		Dolomite		Cement
	ar. Silt ar		Coal		Sponges
	Fine SST		Gypsum		Glauconite
	Medium SST		Lithic Fragment		Pyrite
	Coarse SST		Foraminifera		Iron Minerals
	Marl		Fossils		Mica
	Clay, Limestone		Bryozoa		Carb Fragments

### ENGINEERING LEGEND

	Shoe		FIT
	Mud loss		Mud gain
	Deviation survey		
	DST		
	Test		
	Sidewall Core		
	Core		
	RFT		





10% calc, tr dis pyr, tr carb spk, sft-fm, sbbiky-blky.

CLAYSTONE: med-med dk-dk gry, 10% calc, tr carb spk, tr micr foss, sft-fm, sbbiky-blky.

Survey @ 2554.2m: 45.66° 132.6° Az

CLAYSTONE: med gry-med dk gry, olv gry, 10% calc, tr pyr, tr carb spk, slty i/p, tr sft-mod hd,, sbbiky-blky.

Survey @ 2582.8m: 45.26° 131.2° Az

CLAYSTONE: med gry-med dk gry, olv gry, 10% calc, tr glauc, tr carb spk, slty i/p, tr vf qtz grn, sft-mod hd, sbbiky-blky.

Survey @ 2611.4m: 44.15° 132.1° Az

CLAYSTONE: med gry-med dk gry, olv gry, 10% calc, tr pyr, tr carb spk, tr glauc, slty i/p, tr vf qtz grn, sft-fm, occ mod hd, sbbiky-blky.

CLAYSTONE: med gry-med dk gry, olv gry, 10% calc, tr pyr, tr carb spk, tr glauc, slty i/p, tr vf qtz grn, sft-fm, occ mod hd, sbbiky-blky.

Survey @ 2639.9m: 42.7° 131.1° Az

CLAYSTONE: med gry-med dk gry, olv gry, 10% calc, tr pyr, tr carb spk, tr glauc, slty i/p, tr vf qtz grn, sft-fm, occ mod hd, sbbiky-blky.

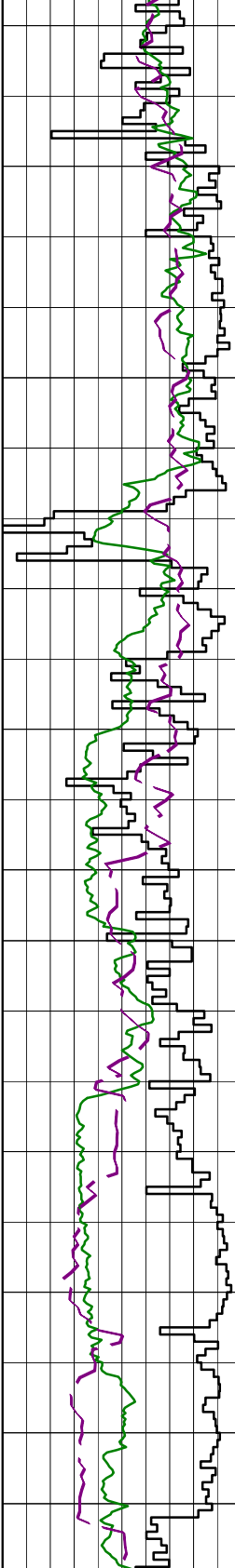
Survey @ 2668.2m: 41.76° 131.9° Az

SANDSTONE: cir, trnsl, yelsh brn, org, f-med grn, rr crs, pr srt, sbang-sbrnd, tr 5% glauc, pr-mod inf por, tr foss, no fluor.

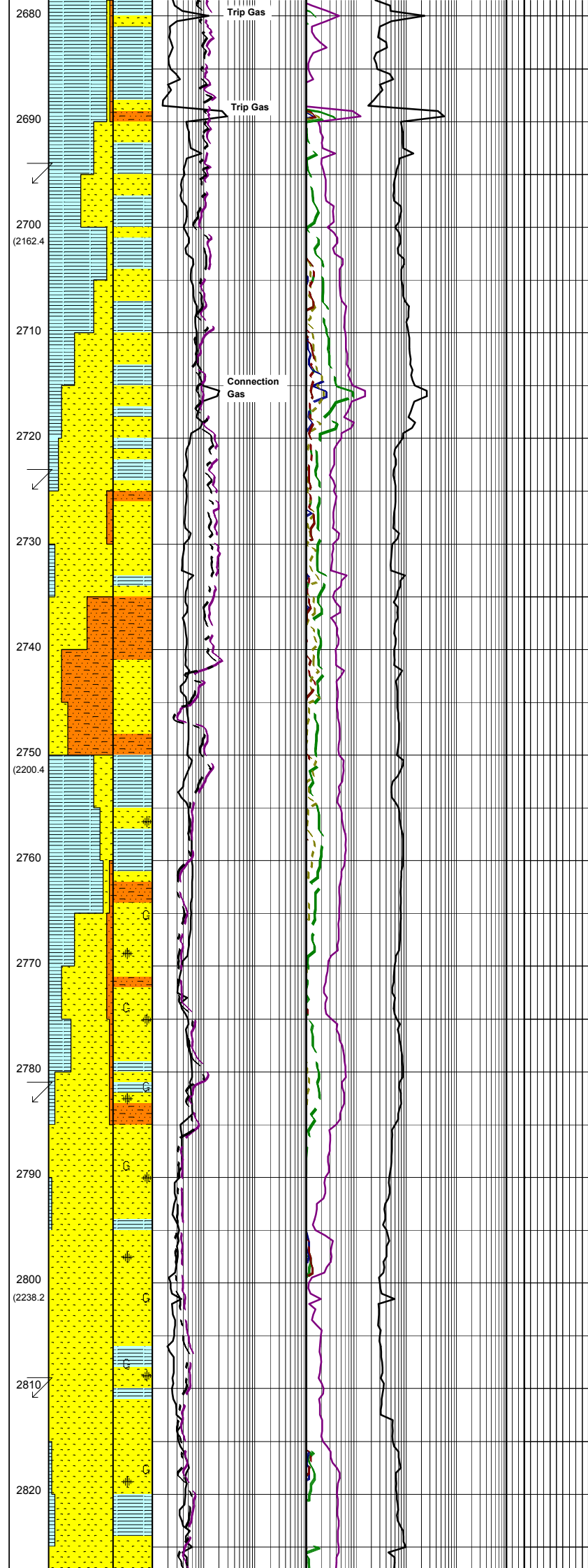
SILTSTONE: brnsh gry, mott grn, yelsh grn, sft-fm, blocky, 10% arg, tr f pyr, tr f carb, com glauc to 40% by volume.

09/04/06  
 WOB:30-50 klbs  
 RPM:170-240  
 SPP:2600-3900 psi  
 FLW:790-950 gpm  
 10/04/06

MW:9.6  
 FV:60  
 YP:11  
 VP:30  
 Gel:8/13/17  
 WL:5.2  
 Sol:9  
 PH:8.0  
 CK:1  
 CL:35K



WOB:25-28 klbs  
 RPM:240  
 SPP:3600-3800 psi  
 FLW:900 gpm



CLAYSTONE:(sample from balled bit),dk grn/gry,grnsh blk,amor,sft,plstc, stky and deformable,f sand i/p,occ %5 silt.

**BIT #4: REED DSX813M**  
 SIZE:311mm 12.25"  
 JETS: 8x16  
 IN:2679m OUT:2689m  
 RUN:10m HRS:5.4  
 COND:1-1-PN-T-X-I-CT-PP

**BIT #5: SMITH GFS10B**  
 SIZE:311mm 12.25"  
 JETS: 3x24,1x19  
 IN:2689m OUT:2969m  
 RUN:280 HRS:29.0  
 COND:4-5-WT-A-E-1-ER-PR

Survey @ 2696.5m: 40.24° 131.3°Az

SANDSTONE:clr,trnsl,pl grn,yelsh brn,vf-med grn,rr crs,pr srt,sbang-sbrnd,tr 10% glauc,fa-g inf por,ise, no fluor.

CLAYSTONE:med-dk gry,occ dk gry,grnsh gry,lt olv gry,sl calc,slty, tr 10% glauc,tr carb spk,fm-mod hd, sft i/p,sbbiky-blky.

Survey @ 2725.8m: 40.40° 131.7°Az

SANDSTONE:clr,trnsl,pl grn,yelsh brn,vf-med grn,rr crs,pr srt,sbang-sbrnd,tr 10% glauc,fa-g inf por,ise, no fluor.

SILTSTONE:brnsh gry,pl gm,yelsh brn,com arg,grd to Arg Siltst, tr 20% glauc,sft-fm,sbbiky-blky.

SANDSTONE:clr,trnsl,off wh,f-vcrs grn,pr-mod srt,sbang-sbrnd,tr glauc,pr inf por, no fluor.

CLAYSTONE:med-med dk gry,olv gry,try pyr,tr glauc,slty i/p sft-mod,sbbiky-amor.

SANDSTONE:clr-trnsl,wh,f-vcrs grn, pr-mod srt,,sbang-sbrnd,tr carb spk, pr-med inf por,no fluor.

CLAYSTONE:med dk-olv gry, tr glauc,tr pyr,tr carb spks, sft-mod,sbbiky-amor.

SANDSTONE:clr-trnsl,ormg-wh, occ lt grn,vf-crs grn,mod srt,sbang-sbrnd,tr glauc,tr carb spk,fr vis por, pr inf por,no fluor.

Survey @ 2782.9m: 41.37° 130.4°Az

CLAYSTONE:med-drk gry, silt i/p,tr glauc,vsft-mod, sbbiky-amor.

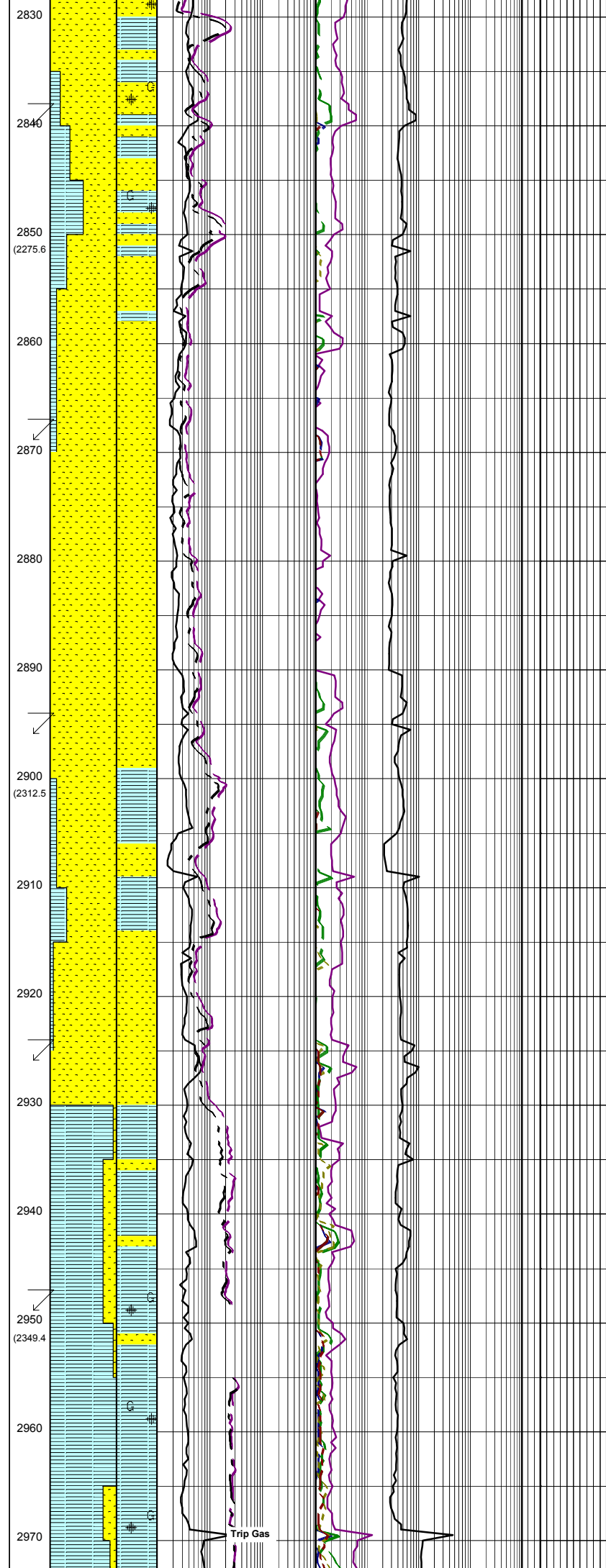
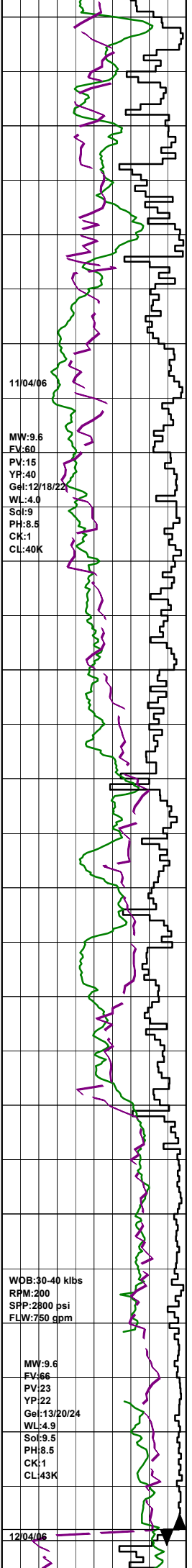
SANDSTONE:trnsl-clr,occ lt grn,vf- crs grn,mod-wl srt,sbang-sbrnd,tr glauc,tr carb spk,tr pyr, fr-gd inf por,no fluor.

SANDSTONE:clr-trnsl,occ lt grn, vf- vcrs i/p,mod-wl srt,sbang-sbrnd,tr glauc,tr carb spk,tr pyr,gd inf por,no fluor.

Survey @ 2811.2m: 41.37° 130.4°Az

SANDSTONE:wh,clr,trnsl,occ lt grn,f-vcrs grn,mod-wl srt,sbang-sbrnd,tr glauc,tr carb spk,tr pyr, fr inf por,no fluor.

CLAYSTONE:med-med dk gry, olv gry,silty i/p,tr glauc, 5% calc,sft-mod, sbbiky.



SANDSTONE:clr-trnsl,occ lt grn,  
 f-crs i/p,mod-wl srt,sbang-sbrnd,tr  
 glauc,tr carb spk,tr pyr cmt,pr vis  
 por,fr inf por,no fluor.

Survey @ 2840.1m: 41.98° 129.1°Az

CLAYSTONE:med dk-olv gry,tr  
 silty i/p,tr glauc,v sft-fm,  
 sbbiky-amor.

SANDSTONE:wh,clr,trnsl,occ  
 lt grn,f-crs,pr-mod srt,sbang-  
 sbrnd,tr glauc,tr pyr,tr carb spk,  
 lse,silty i/p, pr-fr inf por,no  
 fluor.

SANDSTONE:clr,trnsl,wh,occ  
 lt grn,f-crs grn,dom crs,pr-mod srt,  
 sbang-sbrnd,tr glauc,tr carb spk,  
 lse,silty i/p,g inf por,no fluor.

Survey @ 2868.8m: 42.24° 129.6°Az

SANDSTONE:clr,trnsl,wh,occ  
 lt grn,f-crs grn,dom crs,pr-mod srt,  
 sbang-sbrnd,tr glauc,tr carb spk,  
 tr pyr,lse,silty i/p,g inf por,no fluor.

SANDSTONE:clr,trnsl,wh,f-med  
 grn,com crs,pr-mod srt,sbang-sbrnd,  
 tr glauc,tr carb spk,tr pyr, tr foss,  
 lse,silty i/p,g inf por,no fluor.

SANDSTONE:clr,trnsl,wh,yelsh brn,  
 f-med grn,com crs,pr-mod srt,sbang-  
 sbrnd,tr glauc,tr carb spk,tr pyr,  
 lse,silty i/p,g inf por,no fluor.

Survey @ 2896.9m: 42.68° 129.5°Az

SILTY CLAYSTONE:dk gry,grn,tr  
 glauc,cly i/p,sft-disp.sbbiky-amor.

SILTY CLAYSTONE:dk gry,grn,tr  
 glauc,cly i/p,sft-disp.sbbiky-amor.

SANDSTONE:clr,trnsl,wh,yelsh brn,  
 pl grn,f-med grn,rr crs,pr-mod srt,  
 sbang-sbrnd,tr glauc,tr carb spk,  
 tr pyr,calc,lse,silty i/p,g inf por,  
 no fluor.

Survey @ 2926.1m: 43.01° 129.9°Az

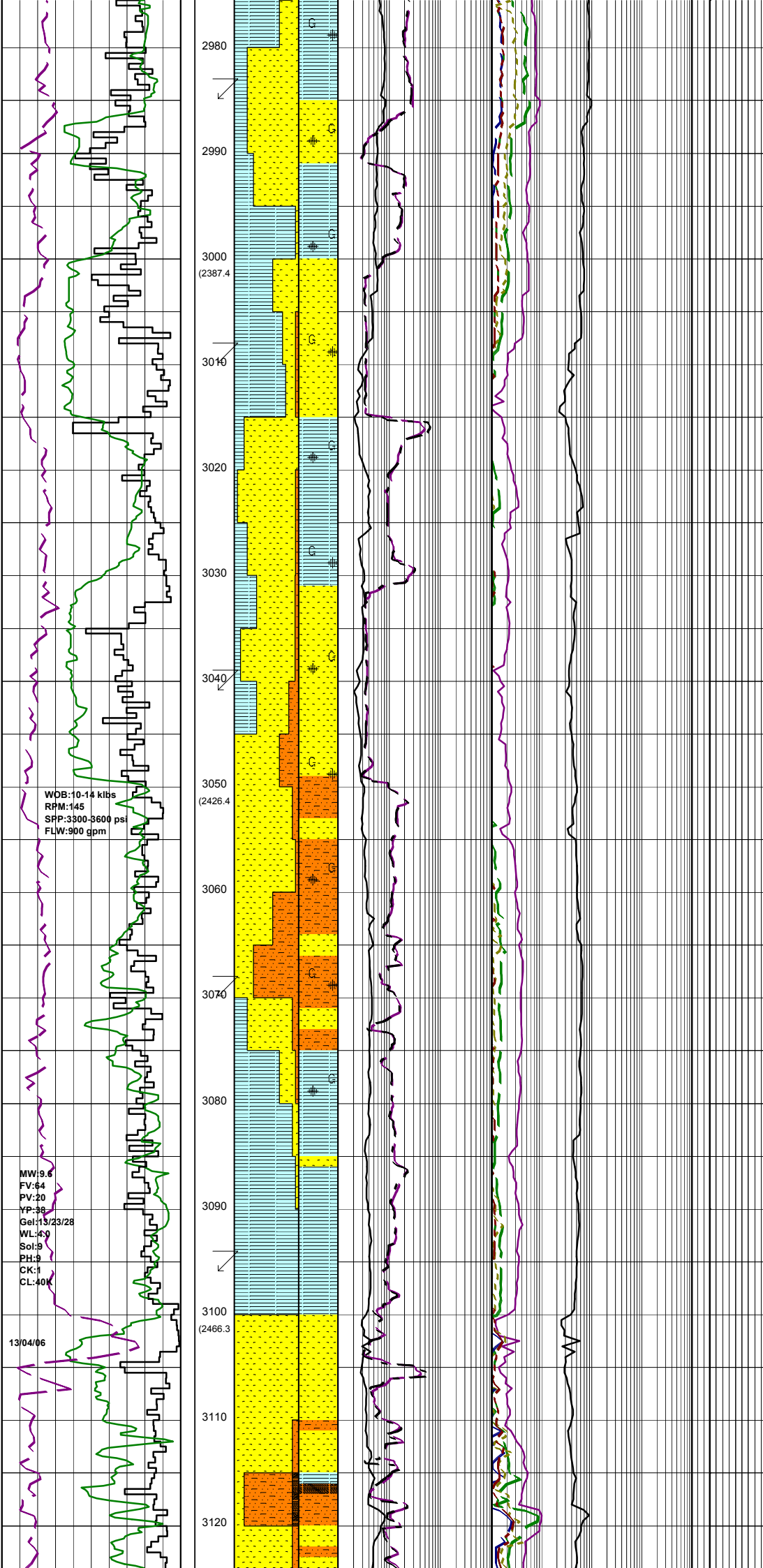
SANDSTONE:clr,trnsl,wh,yelsh brn,  
 pl grn,f-med grn,rr crs,pr-mod srt,  
 sbang-sbrnd,tr glauc,tr carb spk,  
 tr pyr,lse,silty i/p,g inf por,  
 no fluor.

SILTY CLAYSTONE:med dk-  
 gry,lt brn-olv gry,5% carb,tr pyr,tr  
 carb spk,vsft-mod hd,sbbiky-amor.

Survey @ 2948.4m: 41.69° 129.6°Az

SILTY CLAYSTONE:med-drk gry,  
 olv gry,tr glauc,tr carb spk,vsft-  
 mod hd,sbbiky-amor.

BIT #6:Hycalog RSX616M  
 SIZE: 311mm 12.25"  
 JETS: 4x18,2x20  
 IN: 2969m OUT:xxxx  
 RUN: xxx HRS:xx  
 COND:



SILTY CLAYSTONE: med-med dk gry, drk gry, tr glauc, tr pyr, tr carb spk, vsft-fm, sbblky-amor.

Survey @ 2984.5m: 39.88° 129.3°Az

SANDSTONE: trnsi-clr, occ org, occ grn, vf-med, occ crs, mod-wl srt, sbang-sbrnd, tr glauc, lse, fr inf por, no fluor.

SILTY CLAYSTONE: drk grnsh gry med drk gry, occ tan-drk brn, tr glauc, tr pyr, mod-fm, sbblky-blky.

Survey @ 3011.5m: 39.38° 129.4°Az

SILTSTONE: tn-dk brn, tr glauc, sft, sbblky.

CLAYSTONE: med dk gry-olv gry, tr glauc, tr pyr, sft-fm, sbblky-amor.

SANDSTONE: wh-clr, yel-trnsi, f-med, occ crs, mod srt, tr glauc, tr pyr, tr carb spk, lse, fr inf por, no fluor.

Survey @ 3041.1m: 38.31° 129.4°Az

SILTSTONE: drk-olv gry, tan lbrn-brn gry, sil i/p, cly i/p, tr glauc, tr pyr, tr carb spk, tr micmic, occ f snd grs., sft-fri, sbblky-blky.

SANDSTONE: wh, trnsi-clr, vf-med, occ crs, mod wl srt, sbang-sbrnd, tr pyr, tr glauc, lse, fr inf por, no fluor.

Survey @ 3069.8m: 37.19° 129.8°Az

ARGILLACEOUS SILTSTONE: med-drk gry, tr glauc, sft-fm, sbblky-amor.

SILTSTONE: mott wh-drk brn, tr glauc, tr pyr, fm, sbblky-blky.

CLAYSTONE: med-med drk gry, drk gn gry, glauc, silty i/p, tr carb spk, vsft, occ fm, amor, occ sbblky.

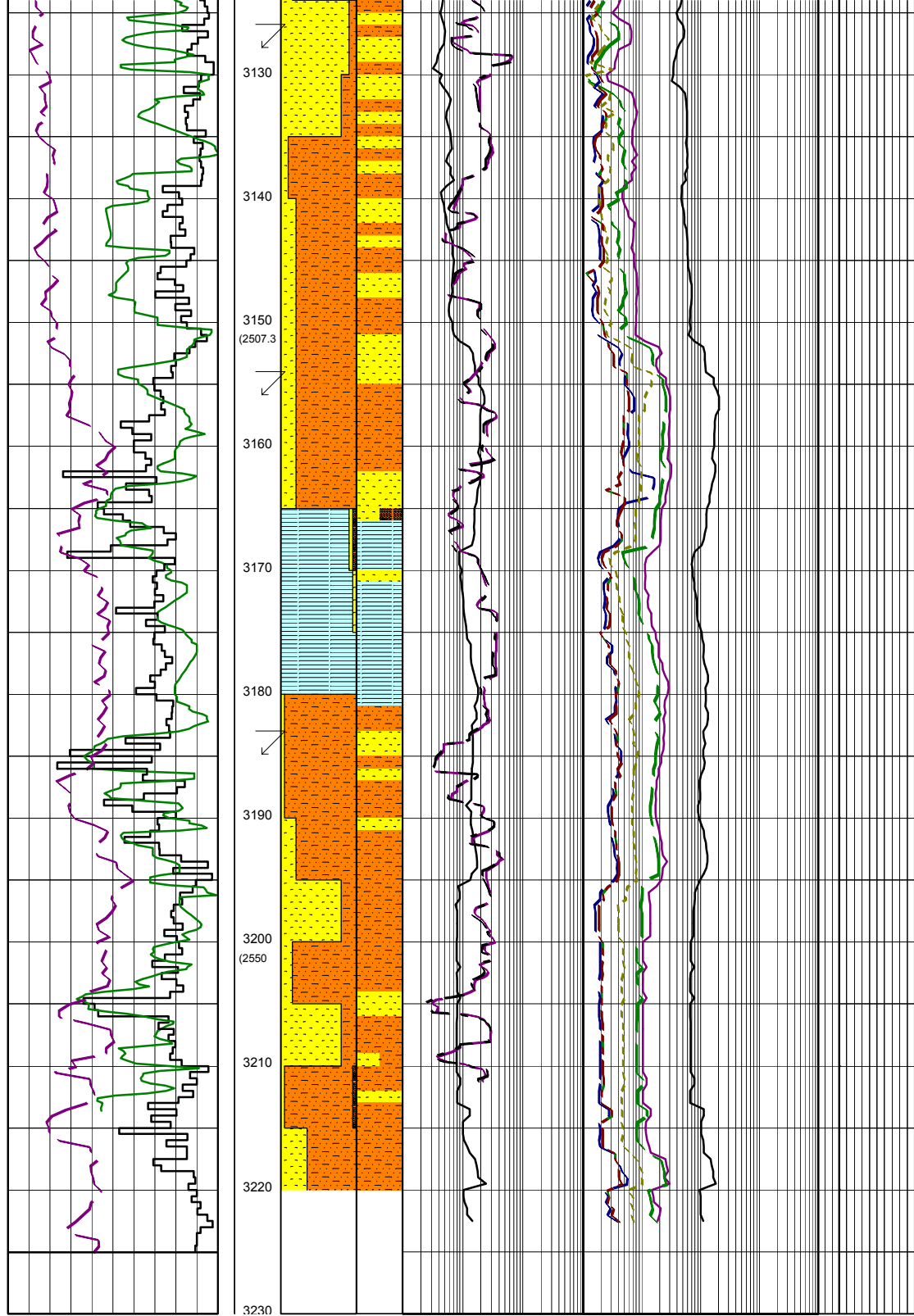
Survey @ 3099.1m: 35.76° 130.7°Az

CLAYSTONE: med-med drk gry, drk gn gry, glauc, silty i/p, tr carb spk, tr pyr, occ f snd, vsft, occ fm, amor, occ sbblky.

SANDSTONE: clr, trnsi, wh, pl gm, dk gry, vf-med grn, tr crs, sbang-sbrnd, mod srt, tr pyr cmt w/ glauc, tr carb spk, sty i/p, lse, gd inf por, no fluor.

COAL: blk, brn blk, dll-ea, brit, tr frm, sbblky, ang-uneven.

SANDSTONE: clr, trnsi, wh, pl gm, dk gry, vf-med grn, com crs, sbang-sbrnd, mod srt, tr pyr cmt w/ glauc, tr carb spk, sty i/p, lse, gd inf por, no fluor.



Survey @ 3127.2m: 34.78° 130.2°Az

SILTSTONE: med drk gry-drk gry, drk gm gry, com glauc, silty i/p, com grd to Arg sltst, tr pyr, sft-fm, occ amor, sbbkly.

SANDSTONE: clr, trnsi, wh, pl gm, dk gry, vf-med gm, com crs, sbang-sbrnd, mod srt, tr pyr cmt w/ glauc, tr carb spk, silty i/p, lse, gd inf por, no fluor.

SILTSTONE: drk gry, lt olv gry, yelsh brn, com glauc, cly i/p, tr C frag, com grd to Arg sltst, tr pyr, sft-fm, occ amor, sbbkly.

Survey @ 3156.2m: 32.89° 130.5°Az

CLAYSTONE: drk gry, lt olv gry, drk gm gry, tr glauc, silty i/p, tr vf qtz gm, com grd to Silty Clyst, tr pyr, sft, occ amor, sbbkly.

SILTY CLAYSTONE: lt-drk gry, brnsh gry, mott wh, tr glauc, tr coal, vsft-sft, sbbkly-amor.

Survey @ 3185.3m: 31.01° 130.8°Az

ARGILLACEOUS SILTSTONE: brnsh blk, med dk-drk gry, olv gry, tr glauc, vsft-m fm, sbbkly-blky.

SANDSTONE: wh, clr-trnsi, f-crs, pr-mod srt, sbang-sbrnd, kaol mtx, sft, pr-fr inf por, no fluor.

SANDSTONE: trnsi-clr, vf-crs, mod srt, sbang-sbrnd, kaol mtx, tr pyr, sft, pr vis por, pr-fr inf por no fluor.

ARGILLACEOUS SILTSTONE: med-drk gry, olv gry, brn gry occ tan, tr carb spk, sft-fm, sbbkly-amor.

POOH @ 3225m TO SHOE TO REPAIR THE TOP DRIVE